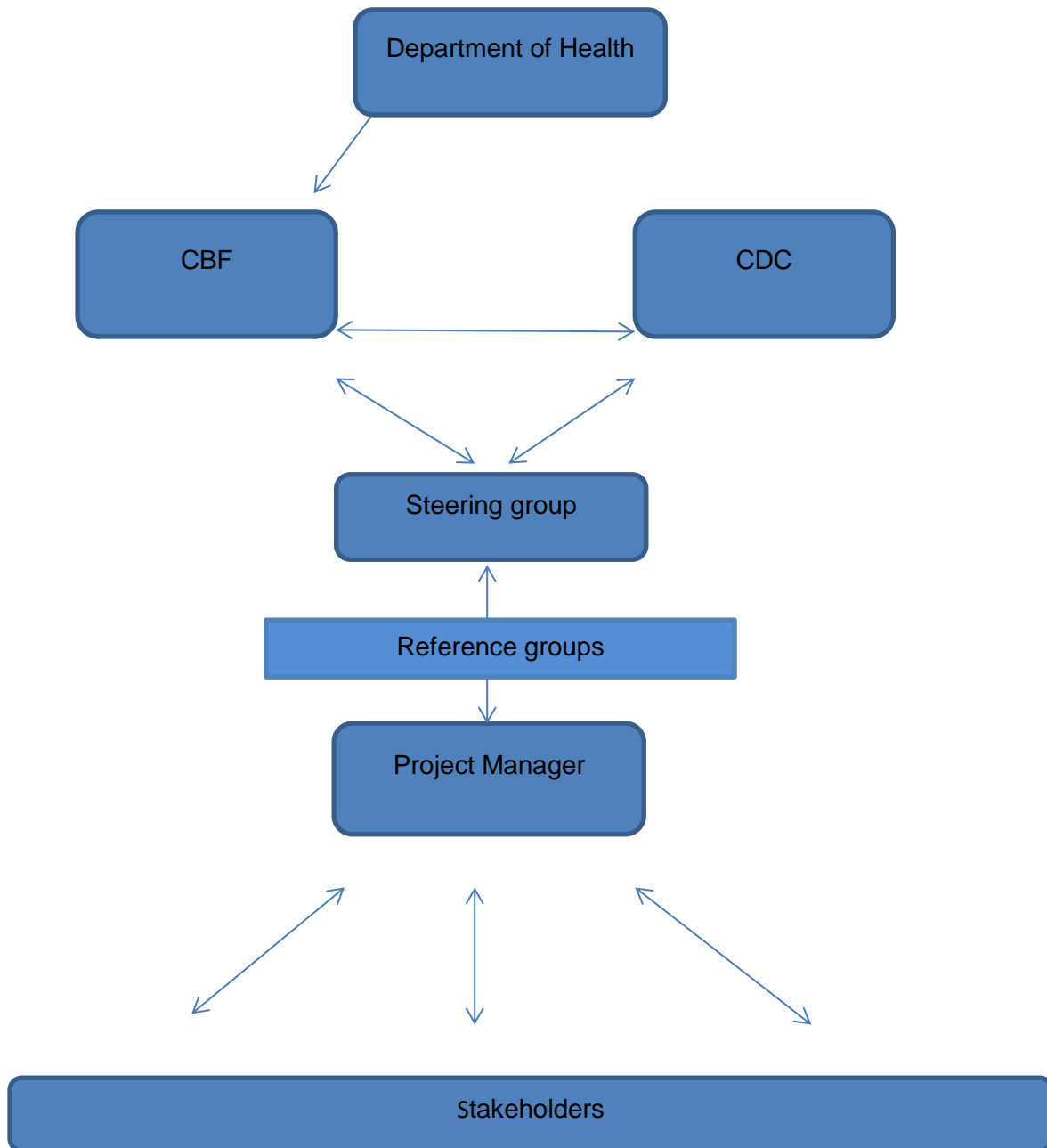


## Governance & Steering group information

Governance – see diagram below for governance arrangements.



DH provide funding for this project through the Innovation, Excellence and Strategic Development Fund. The project will report to DH at the end of each year.

The project is being managed in partnership by the Challenging Behaviour Foundation (CBF) and the Council for Disabled Children (CDC). The Project Manager will be employed by the CBF for the duration of the project.

The project will be overseen by a steering group of experts and key stakeholders. The steering group will meet twice a year.

Steering Group membership is set out in the table below.

<b>Steering Group member</b>	<b>Job Title</b>	<b>Organisation</b>
Jacqui Shurlock	Project Manager	The CBF
Viv Cooper	Chief Executive	The CBF
Gemma Grant	Family Support & Policy Manager	The CBF
Demelza Young	Policy Intern	The CBF
Amanda Allard	Principal Officer	Council for Disabled Children
Christine Lenehan	Director	Council for Disabled Children
Rowena Rossiter	Consultant Clinical Psychologist	
Nick Gore	Lecturer in Learning Disability	The Tizard Centre ,University of Kent
Sarah Bernard	Consultant Psychiatrist for Children with Learning Disabilities	The Michael Rutter Centre, SLAM NHS Trust
Sarah Carter	Winterbourne Lead	Department for Education
Colin Startup	Children/Winterbourne Lead	Department of Health
Professor Gillian Baird	Consultant Paediatrician	Newcomen Centre for Developmental Medicine, Guy's Hospital

The project will work closely with key stakeholders in order to avoid duplication of effort and to co-ordinate and maximise the impact of related projects. The views of children with severe learning disabilities whose behaviour challenges and their families will be sought through this project through workshop events and consultation and consideration of the needs and views of those children and families will be central to decision making. Reference groups will enable input to the project from key stakeholders not represented on the steering group.