

## Update for the CB-NSG Steering Group – October 2014

A huge range of actions are undertaken between national meetings to implement the work of the CB-NSG. In this document the Steering Group highlights a small selection of the progress made, in various areas, since our last meeting. **We would like to say a big thank you to all the CB-NSG members who have contributed to the work detailed here, as well as to members who have contributed to other pieces of work that we have not been able to include here.** If there is a particular strand of work you would like to contribute to, or if you have information about related work to share, please do get in touch.

For regular updates visit the Strategy Group pages of the Challenging Behaviour Foundation website: [www.challengingbehaviour.org.uk/driving-change/national-strategy-group](http://www.challengingbehaviour.org.uk/driving-change/national-strategy-group) or email [nationalstrategygroup@theCBF.org.uk](mailto:nationalstrategygroup@theCBF.org.uk)

### Campaign subgroup update on recent campaign activity

**Winterbourne view Campaign.** Mencap and the Challenging Behaviour Foundation (CBF) have continued to collaborate on a range of policy, parliamentary and media work to influence change of behalf of all children and adults with learning disabilities whose behaviour challenges. The following activity has been taken since our last CB-NSG meeting in March.

#### LD census

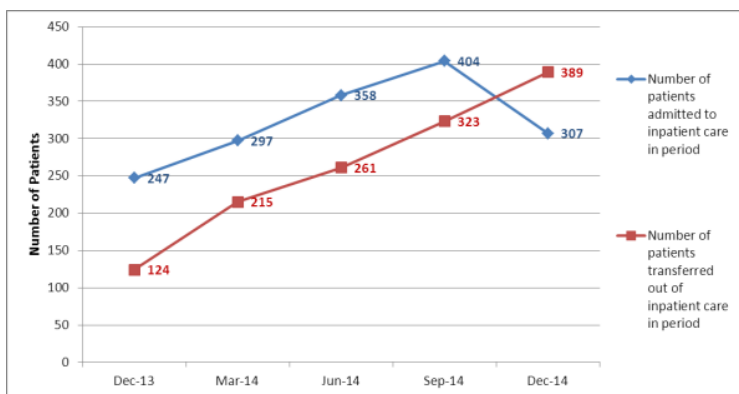
The Learning Disability Census 2014 was released in January 2015. The key points have been highlighted in the infographic to the right but includes:

- **3,230** people in inpatient care
- **1,055** did not need inpatient care according to their care plan.
- **2,345** people (73%) had received antipsychotic medication either regularly or as needed in the 28 days prior to the census collection. Use of antipsychotic medication has increased between 2013 and 2014.
- **1,780** people (55%) had one or more incidents (self-harm, accidents, physical assault, restraint or seclusion) in the three months prior to census day.



**NHS England** has published another two sets of **Winterbourne View Concordat Data**.

- Five sets of quarterly data have now been published in total. The data shows that in the most recent quarter, the total number of patients in inpatient units has shown the first decrease. The graph to the right illustrates the difference between number of patients admitted to inpatient care and the number of patients transferred out of inpatient care, however it is unknown how many of these are readmissions.



Graph illustrating some of the NHS quarterly data

The **National Audit Office (NAO)** published a highly critical report into **care services for adults with learning disability**. The report addresses the failure of the government to meet its commitment to move people out of ATUS and concludes that it was partly due to there being no mechanisms for systematically pooling resources to build sufficient capacity in the community. It states that, so far, there has been no financial incentive for local commissioners to bring people home.

In response to the NAO report a meeting of the **Public Accounts Committee (PAC)** was held. Vivien Cooper (CBF), David Congdon (CBF Advisor) and Sir Stephen Bubb (ACEVO) gave evidence to the committee after which MPs heard from:

- Una O’Brien, Department of Health (DH) Permanent Secretary
- Jon Rouse, DH Director General of Social Care, Local Government and Care Partnerships
- Simon Stevens, NHS England Chief Executive
- Jane Cummings, NHS England Chief Nursing Officer

Verbal progress was made at the PAC: Failings were acknowledged, the human side addressed, priorities re-examined and a long awaited closure programme was announced but real, timely action must follow.



In December 2014, a group of **families** attended a day in London where they inputted into the CBF/Mencap campaign work and **met with key officials** from the Department of Health, NHS England, Care Quality Commission, Association for the Directors of Adult Social Services and the Local Government Association. Families asked the officials questions and told them of their stories. The day was a success, and the officials requested that the meetings become regular. Another day was held in February and a further meeting is scheduled in June.

## Media

Attention around publications/CQC inspections (Calderstones & St Andrews)

Inquest into death of Stephanie Bincliffe – Call for independent inquiry into deaths.

Families:

- Josh
- Chris
- 

## Policy

- **Sir Stephen Bubb** was appointed to chair the NHS Transforming Care Steering Group and his report '**Winterbourne View: Time for Change**' was published in November 2014. It provides a series of recommendations to NHSE and partners.
- The NHSE and partners response to the Bubb Report '**Transforming Care: Next Steps**' and the Department of Health '**Winterbourne View: Transforming Care Two Years On**' report were published at the end of January 2015.
- Green Paper?

Transforming care assurance board update – Beverley?

## Membership news

Core Membership updates:

- Noelle Blackman (Respond)
- Dominic Slowie (or not as he thought he already was core?)

## Next Meeting

The next CB-NSG meeting will take place on **Thursday 11<sup>th</sup> October 2015** at Edge Hill University

If you have any updates you would like to share with members please contact us on [nationalstrategygroup@theCBF.org.uk](mailto:nationalstrategygroup@theCBF.org.uk) or telephone: **01634 838739**.

## General Updates

1. PBS collaborative? Survey Monkey. Future Plans.

2. The development of the National Institute for Health and Care Excellence (**NICE**) **guidelines on Challenging behaviour and learning disability** has progressed. Draft guidelines have been out for consultation and the final version are due for publication in?
3. The National Institute for Health and Care Excellence (**NICE**) are developing **guidelines on mental health problems in people with learning disabilities**: management of mental health problems in people with learning disabilities. A scope of the guideline is now available on the NICE website. The scope outlines the key issues that the guideline will cover, these include: identification, recognition, diagnosis and assessment, interventions, accessibility of services, transitions between services, coordination and communication with key persons in the life of the person with learning disabilities, strategies to engage family and carers in interventions, service structures to support effective delivery of interventions and finally interventions, training and support for family and paid carers which aim to improve the health and well-being of the family and carers, as well as the person with learning disabilities. The guideline will not cover the care and treatment of co-existing disorders that have already been addressed for people with learning disabilities as part of other recent NICE guidelines. The guidelines are due to be published in September 2016.
4. The Children's Commissioners research into **the rights and well-being of children in residential special schools** update?
5. The **joint CBF and Council for Disabled Children Early Intervention Project** continues to... Evidence Papers Published. Case studies resource 'Paving the Way: How to develop...' on the way.
6. Mencap's '**Hear my voice**' campaign, aiming to encourage people with a learning disability, and the millions of family members, carers and support workers connected to them to make their voice heard on the issues that matter to them in the run up to the 2015 General Election. For further information visit their website: <https://www.hear-my-voice.org.uk/>. Four main party leaders?
7. The **Care Quality Commission** launched a **consultation on their proposed guidance on meeting 'fundamental standards of care'** in August 2014. The consultation closes in October 2014. The new regulations set out the fundamental standards of quality and safety; introduce a new 'duty of candour' and a 'fit and proper person' requirement for directors, to enable greater accountability to directors. The fit and proper person requirement comes into force for NHS bodies in October 2014 and the full regulations will take effect for all health and social care services in April 2015. ??
8. The revised **Mental Health Act (1983): Code of Practice** was published in Parliament on 15 January. Subject to Parliamentary approval, it will come into force on 1 April 2015. The revised Code can be found here: <https://www.gov.uk/government/publications/code-of-practice-mental-health-act-1983>

Hi Emily

The only thing to update is the children and young people workshops we are doing for the WVJIP. Details here: [http://www.local.gov.uk/place-i-call-home/-/journal\\_content/56/10180/6908091/ARTICLE](http://www.local.gov.uk/place-i-call-home/-/journal_content/56/10180/6908091/ARTICLE)

We have had a great deal of support from Jacqui Sherlock and the early intervention project, and are using some of their materials – and videos. Jacqui has also found some families for us who are talking at the events, and this has been very well received.

Is this the sort of thing you wanted?

Sue