

Working together to deliver the transformation

Fiona Clark
Programme Director
11th March 2015

Version 3.0

1. Cross-system Transforming Care programme:
 - Scope
 - Structure
2. NHS England: key work areas October 2014 – February 2015.
3. NHS England / LGA / ADASS: “right care, right place”.
4. NHS England – other work areas.

Cross System Transforming Care Programme - scope

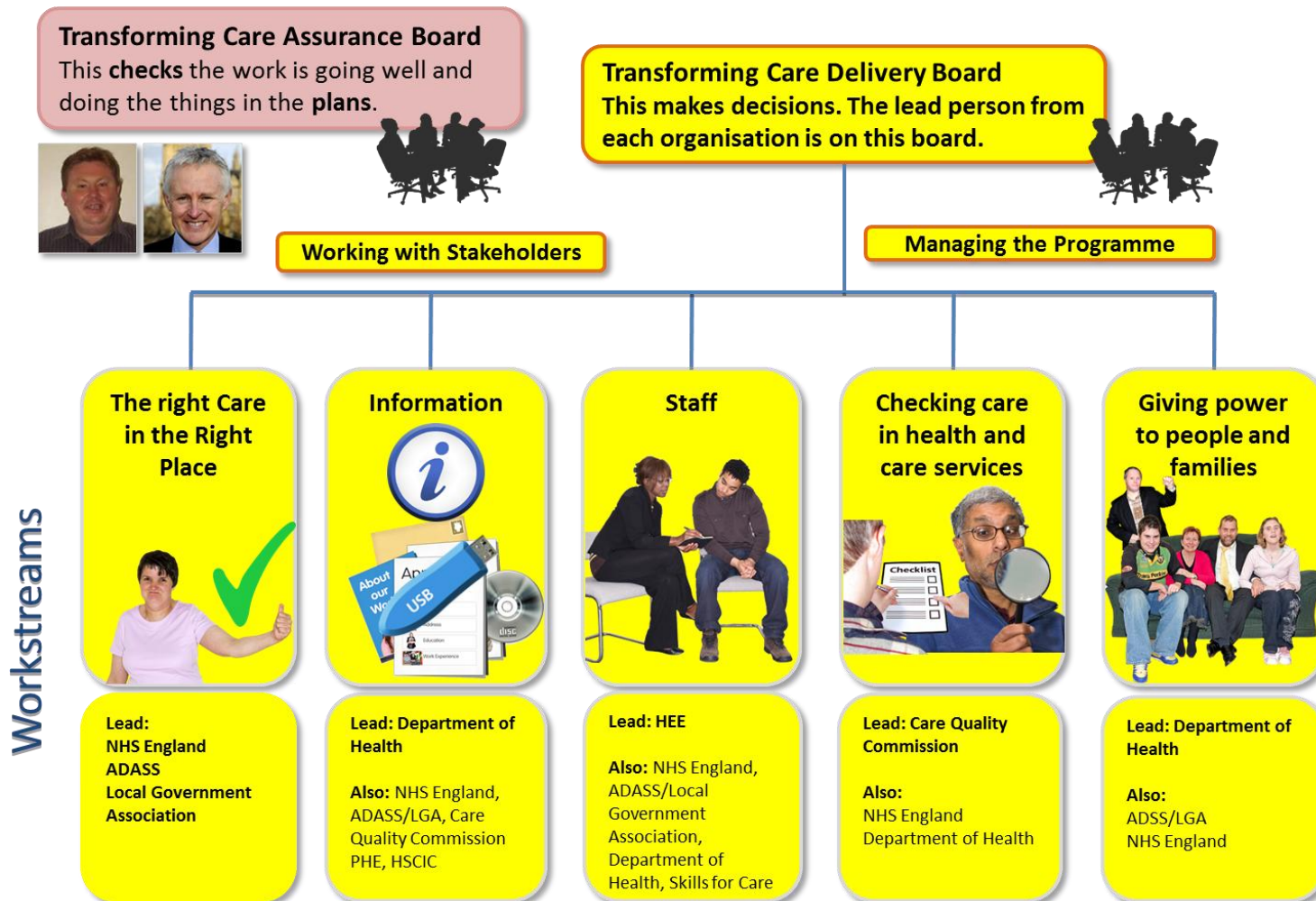
“Transforming Care for people with Learning Disabilities – Next Steps” – published 29 January 2015, jointly by NHS England, the Association of Adult Social Services, Care Quality Commission, Local Government Association, Health Education England and the Department of Health.

Five key work areas

- **Empowering individuals** – giving people with learning disabilities and/or autism, and their families, more choice and say in their care.
- **Right care in the right place** – ensuring we deliver the best care now, whilst re-designing services for the future; care should be in the community and closer to home.
- **Regulation and inspection** – tightening regulation and the inspection of providers to drive up the quality of care.
- **Workforce** – developing the skills and capability of the workforce to ensure we provide high quality care.
- **Data and information** – making sure the right information is available at the right time for the people that need it, and continuing to track and report progress.



Cross System Transforming Care Programme - structure



Pictures: Photosymbols

NHS England: key work areas October 2014 – February 2015

Delivering Best Care Now

- Care & Treatment Reviews:
 - Detailed design completed and road-tested.
 - Documentation set issued, including QA process.
 - Pan-England programme mobilised for 1 April 14 patients (excl. high- and med-secure) – including bottom-up patient count.
- Discharges of 1 April 14 inpatients – increased focus, to maximise the % achieved against the ambition.

Future Care Design

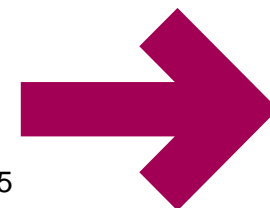
- Planning guidance published, including LD specifics.
- Stephen Bubb report published.
- NHS England and system partners publish *Transforming Care for People with Learning Disabilities – next steps*. Sets out proposals for reducing admissions and transforming services.

Other LD work

- LD focus included in winter Flu Plan.
- Cancer Screening workshop jointly sponsored by NCD LD and NCD Cancer to address the low uptake of national screening programmes by people with LD.
- National workshops held (with NDTI and others) looking at improving uptake, quality and standardisation of LD Annual Health Checks.
- Options appraisal and service specification developed and published for National LD Mortality Review Function. Tender issued.

Data & Information

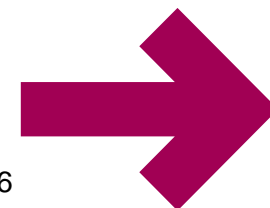
- Assuring Transformation – quarterly data published.
- Operational performance dashboard established.
- Dataset collection to HSCIC agreed



NHS England / LGA / ADASS: “right care, right place”

Future deliverables include:

- National admissions process in place
- Embedded new ways of working
- Taskforce set up
- Closure Programme options developed and work launched
- Road map for co-commissioning and devolving specialised
- Commissioning to local commissioners work developed
- New service model designed for consultation
- Support package launched to enable best practice local commissioning, including arrangements to co-commission specialised services
- Consultation on new service model completed



NHS England – other work areas include....

Integrated Personal Commissioning

“Our aim is to end fragmented like-it-or-lump-it health and social care, giving people the power to decide on the support they themselves want” Simon Stevens

The first wave of the IPC programme will go live on 1 April 2015 - first stage in the delivery of the NHS Five Year Forward View .The first eight demonstrator sites will provide 10,000 people power to decide how their own combined health and social care budget is spent.

Four groups of high-need individuals prioritised for first wave:

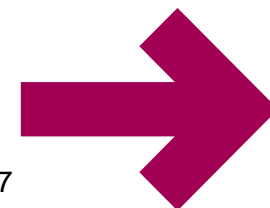
- people with long term conditions, including frail elderly people at risk of care home admission
- children with complex needs
- people with learning disabilities, and
- people with severe and enduring mental health problems.

8 locations announced 9 March 2015 – 3 with specific focus on LD:

- Cheshire West & Chester
- Hampshire
- South west consortium

Joint Health & Social Care Self-Assessment Framework

2014 collection completed, awaiting analysis.



Questions?

