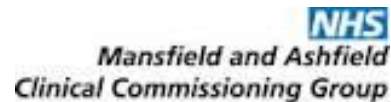


The Nottinghamshire Experience of Transforming Care

Challenging Behaviour National Strategy Group
Meeting
11 March 2016



Transforming Care Programme

- There has been government commitment to transform care and support for adults and children with a learning disability and/or autism who display behaviour that challenges, including behaviour that can lead to contact with the criminal justice system (following the abuse at Winterbourne View).
- Focus is to build community capacity and reduce inappropriate hospital admissions.
- Six 'fast track' areas nationally were chosen to form Transforming Care Partnerships (commissioning collaborations of CCGs, Local Authorities and NHS England's specialised commissioners and to submit a transformation plan.
- Six helped to shape the national approach to supporting change and inform 'Building the Right Support' published in October 2015.
- Remaining 42 areas of the country now formed and submitting plans

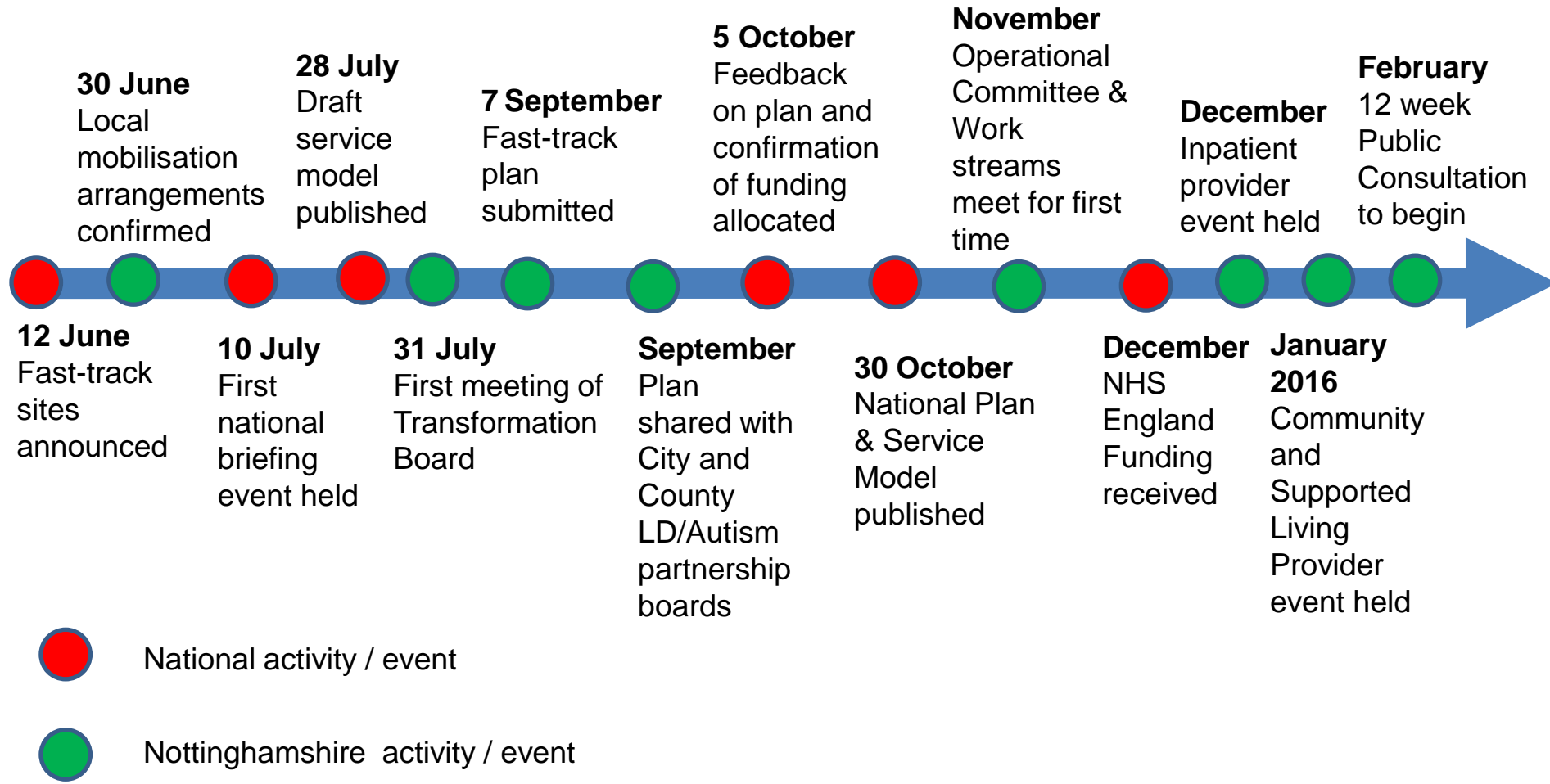
Nottinghamshire Transforming Care Programme (TCP)

- Nottinghamshire was chosen as a fast-track area to be a forerunner of transformation of services.
- The areas were chosen based on the numbers of in-patient beds and their potential to bring together a large number of local authority and CCG commissioners and specialised commissioning, each with different challenges, to test different approaches and effect the biggest change.
- Asked to submit a transformation plan on 7 September 2015.
- Plan was required to describe how community services would be strengthened, reliance on in-patient beds (non-secure, low and medium secure) reduced and closure of some in-patient facilities
- Our vision for transforming care and services set out how care would be focused on keeping people healthy, well and supported in the community.
- £1.2m from NHS England was received in 2015-16 which has to be match funded by the 7 CCGs.

About Nottinghamshire

- Our area covers the populations of Nottingham City and Nottinghamshire County.
- Total population is approximately 1.1 million (2011 census).
- Commissioning organisations involved are 7 Clinical Commissioning Groups, City and County Councils, and NHS England – Specialised Commissioning Hub.
- Large number of inpatient beds (199 covering secure and non secure for adults and children)
- 42 adult and 13 CAMHS beds provided by the NHS and 144 in the Independent Sector.
- Established relationships and joint working between City and County CCG's.
- Established relationships and joint working between City CCG / City LA and County CCG's/ LA.
- However, no other examples of where we have worked on this footprint previously.

Nottinghamshire TCP Timeline 2015 - 2016



Nottinghamshire TCP

Who will be Affected?



Pathway redesign for:

- People with a **mental health** problem which may result in them displaying behaviours that challenge
- People who display **self-injurious or aggressive behaviour, not related to severe mental ill-health**. Often a severe learning disability
- People who display risky behaviours which may put themselves or others at risk (this could include fire-setting, abusive, aggressive or sexually inappropriate behaviour)
- People who display behaviours which may lead to contact with the **criminal justice system** – often those with **lower support needs from disadvantaged backgrounds, personality disorder**

Resettlement programme for:

- People who have been in **inpatient care for a very long period of time**, having not been discharged when NHS campuses or long-stay hospitals were closed

Nottinghamshire TCP

What do we Want People to Say?

- People work together to plan my care and act fast when things change.
- I am involved in deciding how people meet my needs.
- I live in the community with support from and for my family and paid carers.
- I am involved in deciding where I live and who I live with.
- I feel good about my life and I do things that are important to me.
- I get good care from health services.
- I can use health and social care services in the community that are right for me.
- I am supported to stay out of trouble.
- I get really good care if I have to be in hospital because I cannot get the health care I need in the community.
- If I need to be in hospital, then I only stay as short a time as is necessary.

Creating the Plan – How Was it For Us?

Overall it was really exciting but still hard work and frustrating at times.....

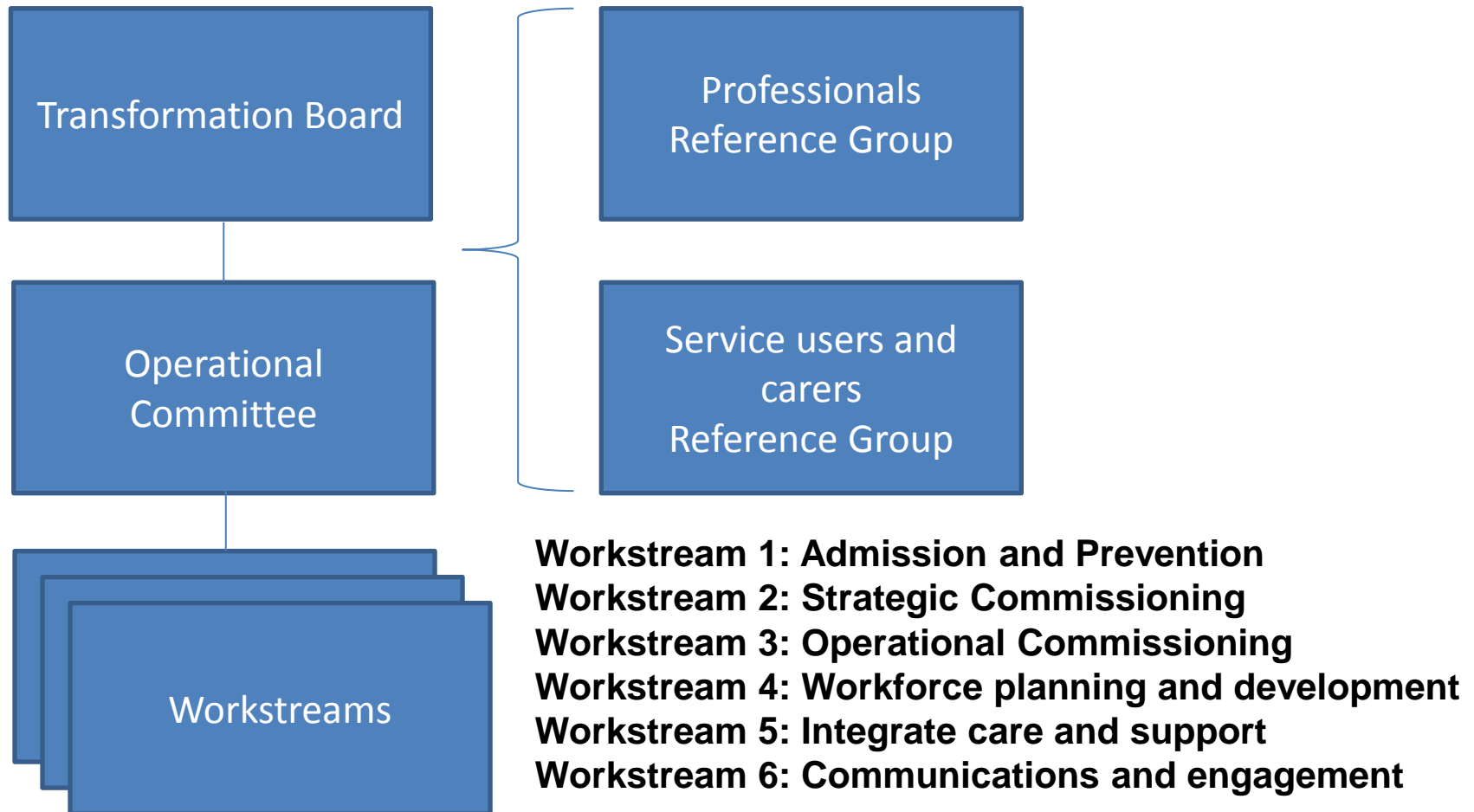
- Real opportunity to make ‘real’ and lasting changes
- Not a footprint that we work on normally
- Gaps in our information and knowledge were quickly highlighted
 - Children
 - People with Autism or Aspergers but without LD
 - Current spend on services across all partners
 - Differences in the way information is presented about populations across City and County
 - Population in low and medium secure at CCG level

Creating the Plan – How Was it For Us?

- Confusion about population in scope (rectified when 'Building the Right Support' published)
- Match funding created difficulties for some CCG's
- Uncertainty about budgets between CCG's and Specialised Commissioning
- Differences in services commissioned across City and County (health and social care)
- Differences in structures / working arrangements in place to support people
- We were anxious that we couldn't undertake as much engagement as we would have liked

Implementation

- All 10 commissioning organisations involved
- Representation from 16 providers
- Professionals Reference Group co-chaired between health and social care
- Service User / Carer Reference Group will be formed after public consultation



What we are Going to do Next...

Communication, communication, communication!!

- Briefing for children's colleagues on Transforming Care Programme
- Formal public consultation with everyone affected by our plans including children, young people and their families
- Consultation / engagement with service providers (children and adults)

Building Blocks

- Using local information and regional/national guidance
'Building the right support'
- Working within existing mechanisms/forums - *don't create something new*
- Working with other areas and learning together – we need to get this right

What we are Going to do Next...

Learning Lessons

- Reviewing adult care and treatment review and admission information
- Reviewing children in care placements, 52 weeks residential placements - *what does this tell us about commissioning gaps, what model do we need to have in place*

New Services / Ways of Working

- Proposal for pooled / aligned budgets covering City & County, Hospital & Community, Specialised Commissioning & CCG, Health & Social Care.
- Interim emergency crisis support service.
- Plans for longer term crisis support.
- Skills academy across providers.

What's working, What needs to improve, What we are going to do.....

What's working

- Strong partnerships in place – delivering TCP for adults; child and adolescent mental health and implementation of Future in Mind; planning and implementing Special Education Needs and Disability reforms
- Identifying children and young people known to services with a Learning Disability and implementing care and treatment Reviews

What needs to improve

- *Identifying themes and trends and taking action* - we are learning from adult care and treatment reviews and escalation of needs resulting in admissions (young adults)
- Transforming care becoming part of *'business as usual'*

Transforming Care for People with Learning Disabilities and/or Autism

who Display Behaviour that Challenges including those with a Mental Health Condition in Nottinghamshire



Our aim is to transform care and support for these individuals so that their care is focused on keeping them healthy, well and supported in the community.

If you would like to meet us to discuss anything outlined in the proposals please attend one of the public drop in sessions located at the Autism East Midlands Locations.

Date: 4 April 2016
Time: 5pm-7pm

Dukeries Autism Centre
Park Street
Worksop
S80 1HH

Date: 5 April 2016
Time: 5pm-7pm

Harby Lodge
13, Pelham Road
Sherwood
NG5 1AP

Date: 6 April 2016
Time: 5pm-7pm

The Sherwood Centre
Hallam Way, Old Mill Ind Est
Mansfield Woodhouse
Mansfield
NG19 9BG



To access the survey and view the consultation document please follow the link below:
www.surveymonkey.co.uk/r/Nottinghamshire-Transforming-Care-Programme-2016
For general enquiries, or to request a hard copy or easy read format please call
0116 295 4183 or email engagement@ardengemcsu.nhs.uk

Any Questions?

